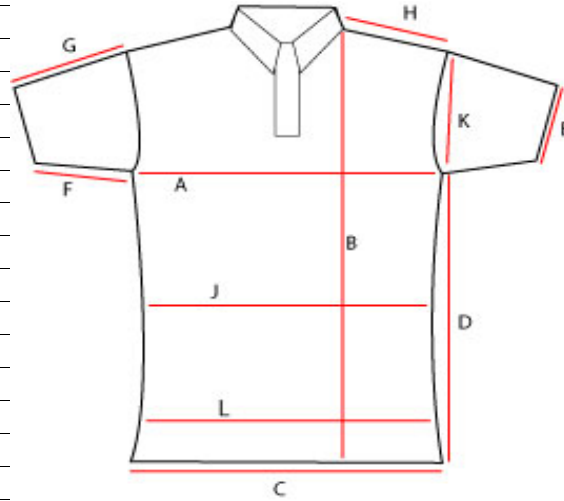


Ladies Polo Shirts (UC106) (Measurements in inches)



Ladies Poloshirt	XS	S	M	L	XL	XXL	XXXL	4XL
LADIES SIZE	8	10	12	14	16	18	20	22
TO FIT A BUST SIZE	30	32	34	36	38	40	42	44
A (1/2 Chest)	17.5	18	19	21	23	25	27	28.2
B (Length)	22.4	23	24	25	26	27	28	31
C	16.5	18	19.7	22	24	26	28.7	30.7
D	14.6	15	15.4	16.1	17.2	17.7	18.1	20.5
E	5.5	5.9	6.3	6.7	7	7.1	7.1	7.9
F	5.5	5.9	5.9	6.3	6.3	6.3	6.3	6.3
G	8.7	9.1	9.8	10.2	10.6	11	11	11.4
H	4.5	4.5	5	5.25	5.5	5.75	6	6.5
J	15.4	16	17.5	19	21	22.5	25.5	28
K	7.9	7.9	9.1	9.4	9.5	9.8	10.6	11.4
L	16.5	18	20	22	23.5	25	28.5	29.5



SIZE CHART: Childrens

All Measurements are in Inches, unless specified

CHILDRENS POLOSHIRTS

Childrens Poloshirt Specification	2YR	3/4YR	5/6YR	7/8YR	9/10YR	11/13YR
TO FIT A CHEST SIZE OF	22	24	26	28	30	32-34
CHEST (1" BELOW ARMHOLE)	12	13	14	16	17	18
LENGTH (NECK POINT ON SHOULDER TO HEM)	16.5	17.5	19	20.5	22	24
SLEEVE LENGTH (Overarm including cuff)	4.5	5	5.5	6	6.5	7
SLEEVE LENGTH (Underarm including cuff)	2	2.5	3	3.5	4	4.5
SLEEVE OPENING	4.5	5	5.9	5.9	6.7	7
PLACKET LENGTH	4	4	4	5	5	5
PLACKET WIDTH	1.35	1.35	1.35	1.35	1.35	1.35
BUTTON QUANTITY	3	3	3	3	3	3

CHILDRENS SWEATSHIRTS

Childrens Sweatshirt Specification	2/3YR	3/4YR	5/6YR	7/8YR	9/10YR	11/12YR
TO FIT A CHEST SIZE OF	22	24	26	28	30	32-34
CHEST (1" BELOW ARMHOLE)	13	14	15	16	17	18
ACROSS SHOULDER (BETWEEN SHOULDER POINTS)	12	13	14	15	16	17
LENGTH (NECK POINT ON SHOULDER TO HEM)	14.5	16.5	19	21	22	24
ARMHOLE	6.5	7	7.5	8.5	9	9.5
LONG SLEEVE LENGTH (NECK POINT TO START OF CUFF)	13.5	15	16.5	19	22.5	25
CUFF OPENING	2.5	2.5	2.5	2.5	2.5	2.5
CUFF WIDTH	2	2	2	2	2	2
NECK OPENING (SHOULDER SEAM TO SHOULDER SEAM)	7	7	7	7	7	7
NECK RIB (DEPTH OF RIB)	1	1	1	1	1	1
NECK DROP (CB NECK SEAM TO CF NECK SEAM)	2	2	2	2	2	2
WIDTH AT HEM RELAXED	9	9.5	10	10	11.5	12.5

CHILDRENS FLEECE JACKETS (UC603)

Fleece Jackets Children	2/3YR	3/4YR	5/6YR	7/8YR	9/10YR	11/12YR
TO FIT A CHEST SIZE OF	22	24	26	28	30	32-34
Chest	15	16	17	18	19	20
Length of garment from Centre Back	14.5	16.5	19	21	22	24
Armhole	6.5	7	7.5	8.5	9	9.5
Sleeve length from c.b neck	17	19.5	20	23.5	26	28
Neck Round	15	15	16	16	17	17
Neck Height	6.5 CM	6.5 CM	7.5 CM	7.5 CM	8.5 CM	8.5 CM



SIZE CHART: Hi Viz

(Measurements in Centimetres)

UC801 (Hi Viz Sleeveless Waistcoat)	S	M	L	XL	2XL	3XL	4XL
CHEST	53	57	61	65	69	73	77
HEM	53	57	61	65	69	73	77
NAPE TO HEM	70	70	70	70	70	70	70
SHOULDER	15.5	16.5	17.5	18.5	19.5	20.5	21.5

(Measurements in Centimetres)

UC802 (LS Hi Viz Waistcoat)	S	M	L	XL	2XL	3XL	4XL
CHEST	58	60	62	64	66	68	70
HEM	58	60	62	64	66	68	70
NAPE TO HEM	70	70	70	70	70	70	70
SHOULDER	15.5	16.5	17.5	18.5	19.5	20.5	21.5

(Measurements in Centimetres)

UC803 (Road Safety Jacket)	S	M	L	XL	2XL	3XL	4XL
CHEST	59	63	67	71	75	79	83
BOTTOM	59	63	67	71	75	79	83
COLLAR TO CUFF	80.5	82	83.5	85	86.5	88	89.5
NAPE TO HEM	83	84	85	86	87	88	89
CUFF	35	35.5	36	36.5	37	37.5	38
COLLAR	45.9	47.2	48.5	49.8	51.1	52.4	53.7

(Measurements in Centimetres)

UC804 (Bomber Jacket)	S	M	L	XL	2XL	3XL	4XL
CHEST	118	126	134	142	150	158	166
HEM	84	92	100	108	116	124	132
NAPE TO HEM	71	72	73	74	75	76	77
SHOULDER TO CUFF	63	64	65	66	67	68	69
SHOULDER TO SHOULDER	57	58	59	60	61	62	63
BICEP	56	58	60	62	64	66	68

All Measurements in Inches

UC805 (Hi Viz Poloshirt)	S	M	L	XL	XXL	3XL	4XL
CHEST (1" BELOW ARMHOLE)	20	21	23	24	25	27	29
ACROSS SHOULDER (BETWEEN SHOULDER POINTS)	20	21	23	24	25	27	29
LENGTH (NECK POINT ON SHOULDER TO HEM) Front	27	28	29	30	30	31	32
ARMHOLE	9	9.5	10.5	10.5	11	12	13
SLEEVE OVERARM (INCLUDING CUFF)	8.5	9	10	10	10	10.5	11
UNDERARM	5.25	5.5	6.25	6.25	6.25	6.5	6.75
SLEEVE OPENING	5.5	5.75	6.25	6.25	6.5	6.75	7

(Measurements in Centimetres)

UC806 (Kids Hi Viz Vest)	4-6 Yrs	7-9 Yrs	10-13 Yrs
Chest	40	44	48
Nape-Hem	40	44	48
Hem	44	48	52

Tape: distance between two vertical bands over shoulders in centimetres

Measurements in Centimetres	S	M	L	XL	2XL	3XL	4XL
UC801	26	28	30	31.5	32.5	35	37
UC802	26	28	30	31.5	32.5	35	37
UC803	34.4	34.4	36	37.6	39	40.8	42.4
UC804	31.2	32.2	33.2	34.2	35.2	36.2	37.2
UC806	16 (4-6yrs)		17 (7-9yrs)		18 (10-13yrs)		